

BILFINGER NOELL GMBH

GROUTING

FOR NUCLEAR POWER PLANTS



Grouting

Bilfinger Noell GmbH is an experienced supplier of grouting solutions for solid and liquid waste. Several technologies are applied:

- liquid waste is grouted by use of agitators or by use of purpose-built mixers that mix the liquid waste and the cement prior to filling it into the container.
- the grouting of solid waste is performed by applying several recipes and the correspondent technology by using cement, additives, bentonite and others.

The solid or liquid waste is immobilized by grouting either in hot cells or in other remotely operated areas depending on the radioactive content of the waste.

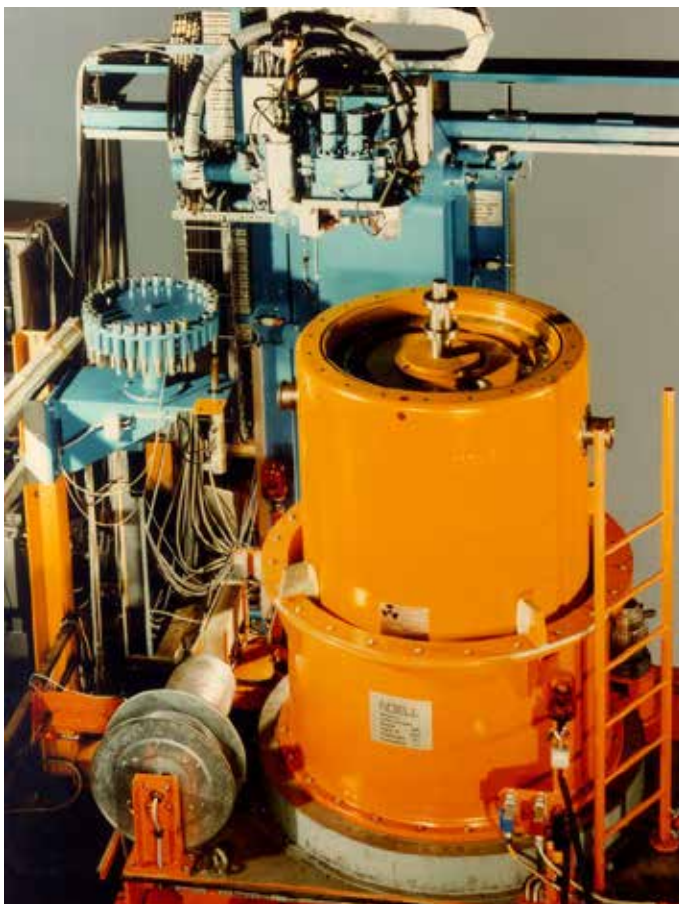
Technicak Data:

- Germany: Physikalische Technische Bundesanstalt Braunschweig, NPP Lingen, Reprocessing Plant Karlsruhe, NPP Grafenrheinfeld
- Switzerland: NPP Mühleberg and Leibstadt
- France: Bugey ICEDA
- China: NPP Fangchenggang





Grouting



Grouting



Grouting

Engineering & Technologies

Bilfinger Noell GmbH
 Alfred-Nobel-Straße 20 · 97080 Würzburg · Germany
 Phone: +49 931 903-6003 · Fax +49 931 903-1018
 noell.nuclear@bilfinger.com · www.noell.bilfinger.com

References:

- Germany: Physikalische Technische Bundesanstalt, KKW Lingen, WAK Karlsruhe, KKW Grafenrheinfeld, THTR Hamm-Uentrop
- Switzerland: NPP Mühleberg und Leibstadt
- China: KKW Fangchenggang